

Seville N

2017 SQ FT

4015 - 6 Avenue SW



- 3 bedroom, 2.5 bath home with a spacious upstairs bonus room
- Upstairs laundry
- 9' ceilings on the main floor
- Fireplace in the great room
- Pot lights and pendent lights in kitchen
- Quartz countertops in the kitchen and second floor bathrooms
- Master bedroom includes a 4 piece ensuite and a large walk in closet
- Railing with metal spindles on main and second floor
- 6 piece appliances, includes a chimney style hood fan
- Large walk in pantry
- 2 extra feet added to the length of the great room
- Triple pane low E argon filled Energy Star rated windows
- Heat recovery ventilator, high efficiency furnace and hot water tank

The Hills at Charlesworth Showhome

714 Charlesworth Way SW, Edmonton

587.521.5869

btate@bedrockhomes.ca

Job # CHH-0-033769 Lot 46, Block 2, Plan 172 0664

Notes:

bedrockhomes.ca

VISIT US AT ANY OF OUR SHOWHOMES!

Monday - Thursday 3-8pm, Weekends & Holidays 12-5PM

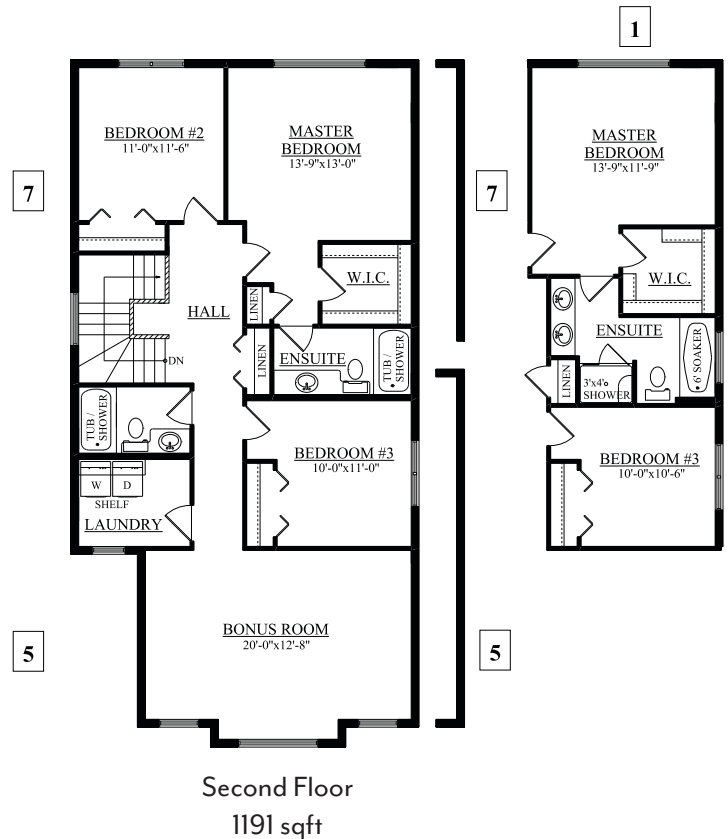
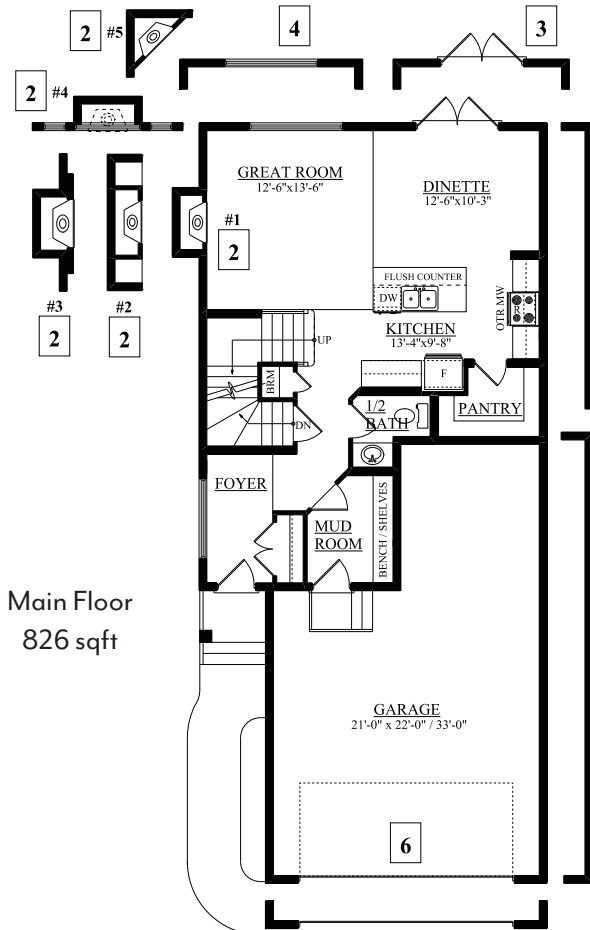


Seville N
 2017 SQ FT
 4015 - 6 Avenue SW



The Hills at Charlesworth Showhome
 714 Charlesworth Way SW, Edmonton
 587.521.5869
 btate@bedrockhomes.ca

Job # CHH-0-033769 Lot 46, Block 2, Plan 172 0664



bedrockhomes.ca

VISIT US AT ANY OF OUR SHOWHOMES!
 Monday - Thursday 3-8pm, Weekends & Holidays 12-5PM

